



San Francisco Bay Chapter  
2530 San Pablo Avenue, Suite I  
Berkeley, CA 94702  
(510) 848-0800

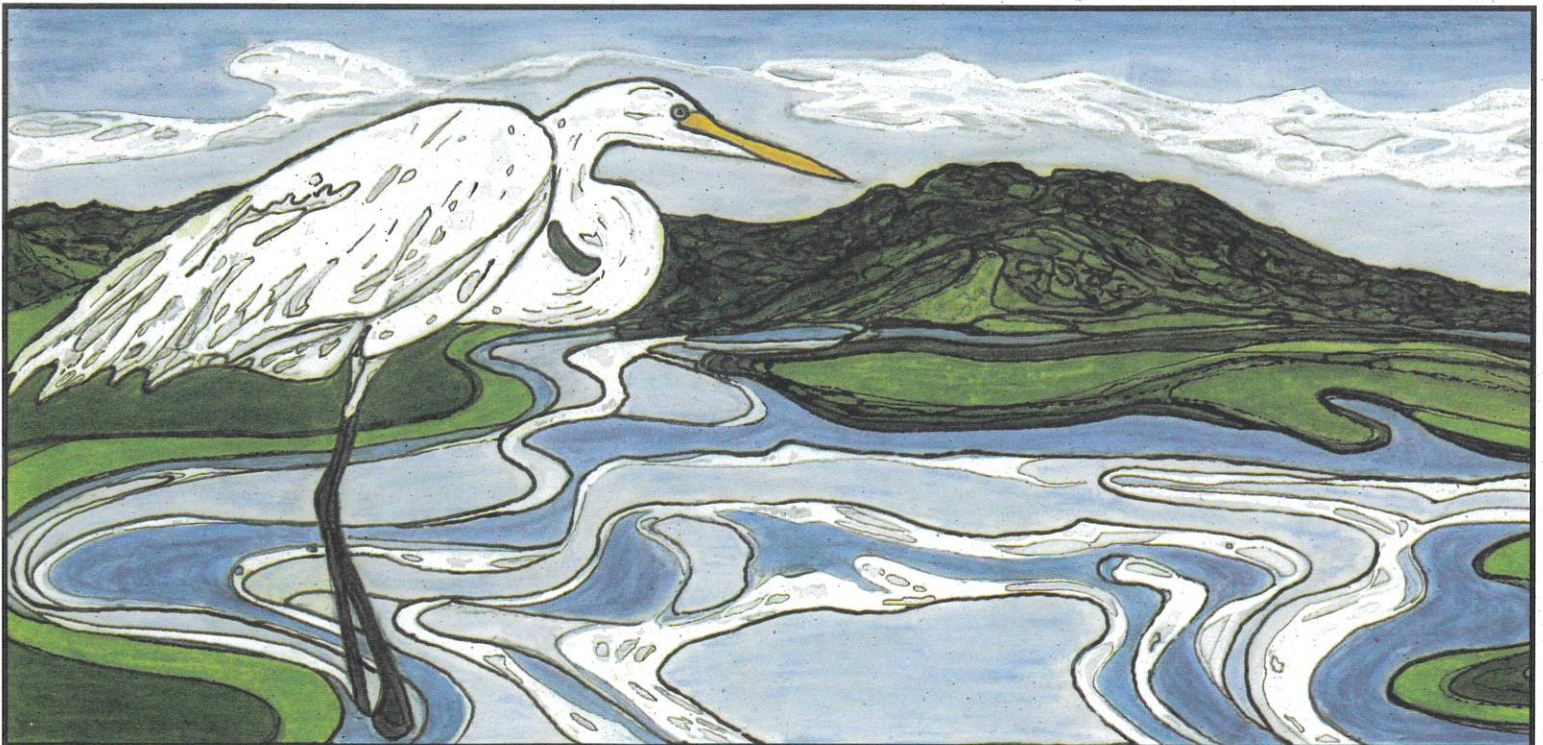
Nonprofit  
US Postage Paid  
Permit No. 446  
Oakland, CA

100% Post-Consumer Paper/Soy Based Inks



# Eastshore State Park Restoration Plan

Citizens for the Eastshore State Park, Golden Gate Audubon Society, Save The Bay, Sierra Club



# Conservation and Habitat Restoration Plan for the East Bay Shoreline

**We have the opportunity to make a difference.** The Eastshore State Park contains critical habitat for many endangered species. Restoration and enhancement of wildlife habitat will protect existing native plants and animals, helping them to flourish and grow. With careful planning, this park can protect wildlife AND be a beautiful recreational resource.

Did you know that  
*nearly 90% of the Bay's shoreline habitat for wildlife has been lost?*



**We must plan long term.** We have only begun to understand the profound changes made to the Bay's ecosystems — alterations that are escalating each decade. *The Eastshore State Park provides a critical opportunity to restore and preserve what little habitat remains.* We have the responsibility to recognize this chance to make a difference -- to plan for the next century, the next millennium.

**What we can do right now:** The Sierra Club, Citizens for the Eastshore State Park, Golden Gate Audubon Society, and Save the Bay have a plan to protect and restore essential wildlife habitat on the shoreline. Please see the map below for the plan's details.

**We need you to speak for the threatened birds, plants and other wildlife in the new Eastshore State Park.**

Northern Harrier "Marsh Hawk": *Circus cyaneus (special-status species)*

18-23" Found locally year-round. Brownish-gray above, white below; hooked bill, long wings with black tips; white rump, long barred tail. Habitat: Marshes and open lands.

# The Conservation and Habitat Restoration Plan for the Park

- **PROTECTED WETLANDS and CRITICAL-HABITAT AREAS**

Existing wetland habitat for rare and endangered species. Public access extremely restricted. **Areas # 1, 5, 11, 12, 15, and 16.**

- **THE BERKELEY MEADOW** Protect, restore and enhance seasonal wetlands and coastal shoreline habitat for raptors and other species. Limited public access, leashed dogs only. **Area #8.**
- **ALBANY BULB** Protected as wildlife habitat area.

Restore as coastal shoreline habitat. Limited public access, leashed dogs only. **Area #13.**

- **BUFFER/TRANSITIONAL AREAS** Transitional zones along water's edge to protect wildlife habitat from the higher intensity use areas. Open to human access, leashed dogs only. **Areas #2, 3, 7, 10, 14, 15, 16 (northern section), and along all creek outfalls.**

- **PASSIVE RECREATION** Areas open for unstructured recreational activities. **Areas #4, 6, 10, and 14.**

- **CREEK RESTORATION** Seven creeks comprise the watershed that flows into the bay along this section of shoreline.

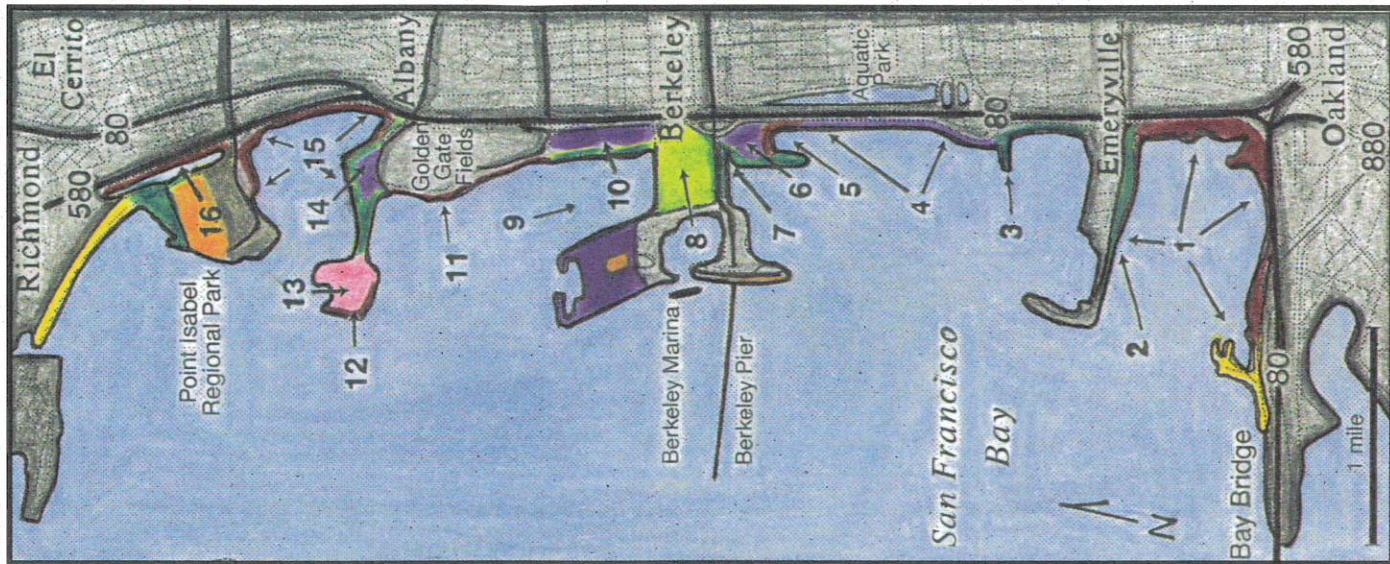
From North to South, they are:

Cerrito Creek (joined by Middle and Capistrano Creeks before entering bay) and Marin Creek (**Area #15**), Codornices Creek (**Area #11**), Schoolhouse Creek (**Area #10**), Strawberry Creek (**Area #7**), Potter Creek (**Area #3**), Derby Creek (**Area #1**)

- **OFF LEASH DOG AREAS** Existing use at Point Isabel Regional Park (**Area #16**) and the City of Berkeley's Cesar Chavez Park adjacent to the Berkeley Marina.

- **SMALL BOAT RECREATION** Activity consistent with the protection of wildlife habitat. **Areas #5, 7, and 9.**

- **POTENTIAL PARK EXPANSION** Areas to be considered for potential park boundary expansion include the Richmond shoreline North of Point Isabel Regional Park (**Area #16**) and the shoreline along Highway-80, West of **Area #1.**



# Let's create a Bay Shore showpiece – a shining example of what can be created, accomplished.

A judicious blend of uses – incorporating the needs of our entire community: plants, animals, and people.

**MAKE YOUR VOICE HEARD!** Please show your support for our Conservation and Habitat Restoration Plan by contacting the planners for the **Eastshore State Park** call: (800) 988-PARK (7275) or **E-mail:** [eastshore\\_statepark@hotmail.com](mailto:eastshore_statepark@hotmail.com) or **visit the web site:** [www.eastshorestatepark.org](http://www.eastshorestatepark.org) or write to: Don Neuwirth, Planning Manager, Eastshore State Park, Neuwirth and Assoc., P.O. Box 460173, San Francisco, CA 94146-0173.

For information from the **Sierra Club's SF Bay Chapter** regarding this issue, contact: Norman La Force at (510) 526-4362 or E-mail [nlaforce@ix.netcom.com](mailto:nlaforce@ix.netcom.com). The **Sierra Club's SF Bay Chapter** office can be reached at (510) 848-0800.

For information from the **Citizens for the Eastshore State Park**, contact: Stana Hearne, Executive Director at (510) 339-9028



**The East Bay has very limited open space adjacent to the bay – area critical to many species.** Although Wildcat, Tilden, Sibley, Huckleberry, Redwood and Chabot Regional Parks form an incredible chain of habitat for native plants and animals, shoreline habitat is desperately needed!

Burrowing Owl *Speotyto cunicularia* (special-status species)

9-10" Found locally year-round. Brown with short tail, long legs; large yellow eyes; boldly spotted and barred below. Habitat: fields, plains, deserts.

**On the cover:**

Great Egret *Casmerodius albus* (special-status species)

22-24" Found locally year-round. Slender snow-white body with plumes on long slim neck; pointed yellow bill, black legs and feet. Habitat: Fresh and salt water marshes, marshy ponds, and tidal flats.